



# Phusion Onsite

Mobile collection software

UK: +44 (0)1642 373 000  
AUS: +61 (0)8 6143 4680  
hello@phusionim.com  
www.phusionim.com

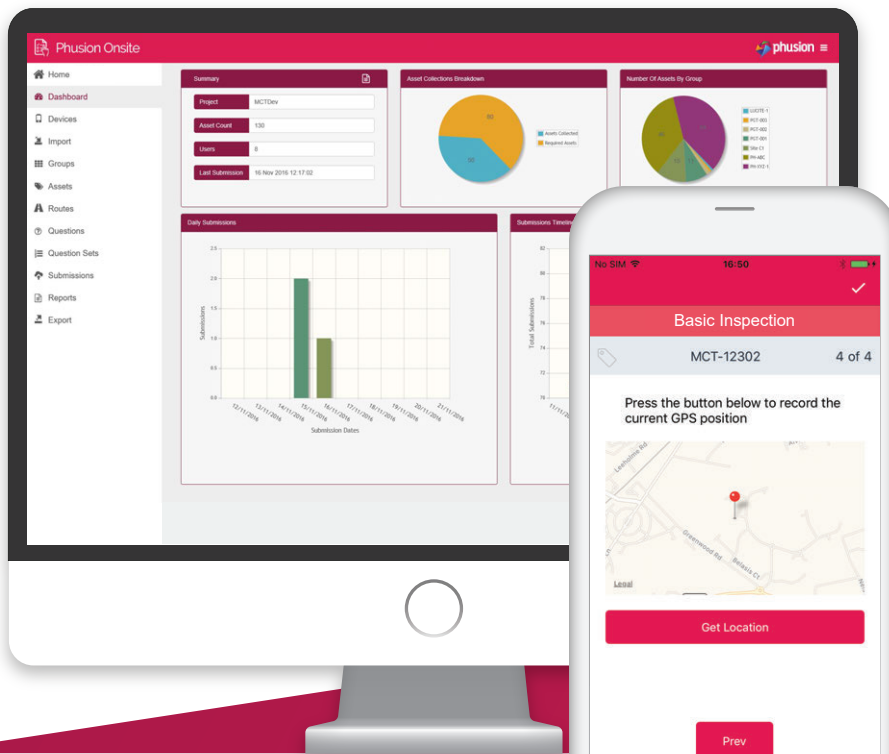


# Phusion Onsite

Phusion Onsite is a powerful mobile and web-based software for the collection and inspection of asset information, utilising the latest mobile technology such as QR / RFID scanners and image capture. It allows field operators and office teams to work together to ensure that your information is up-to-date and accessible.

Correct and connected information increases operational efficiency whilst reducing errors and costs. Phusion Onsite works stand-alone or can integrate with the full Phusion software suite and other leading software systems, so you know you're in safe hands.

Based on configurable architecture, Phusion Onsite can be customised by its users to suit a wide range of different usage scenarios thanks to a straightforward question builder interface.



Phusion Onsite is ideal for:

- Site data collection
- Hazardous area inspections
- Fault recording
- Routine maintenance
- Equipment inspections
- Site surveys

...and so much more

Available on



### Configurable questions

Design your own questions for asset data collection, to meet your exact business requirements.

### Optimise workflow

Built in logic to collect only the information you need. Dig deeper in specific areas and bypass unnecessary questions.

### Seamless integration

Integrate with existing enterprise software and data sets to provide seamless field data management.

### Reduce data entry

Feed forward your forms with previously collected information from existing data sets to minimise field data entry and reduce errors.

### Ensure data visibility

Web based dashboard provides powerful analytics and an audit trail of all activity. Custom reports can be built using a database reporting engine.

### Remote support

View the latest data and images instantly\* through the dashboard to provide remote collaboration and support to the user.

### Access documents, drawings and images

Give field operators access to related procedures, equipment locations and photos to optimise the time on site and reduce visits back to base.

### Complete data management solution

Integrate with additional Phusion software and services to create a tailor made, scalable data management solution.

### Utilising mobile hardware

Uses built in image capture, barcode and QR code reader, GPS and NFC\*\*. Available on a wide range of mobile devices including Zone 1.

### Image gallery

Images can be captured during collection and re-used to aid equipment or location identification, support instructions and highlight faults for repair work.

\* internet connection required for instant data and image upload  
\*\* with compatible mobile devices



Improves  
safety

Reduces  
error!s

Easy<sup>to</sup>  
setup

Reduces  
collection & inspection  
↓↓↓ costs

Reduces  
field operator  
time

Collaborative  
working



# Phusion Software Suite

Phusion's software and mobile applications have been developed specifically for Engineering Information Management. Each software application from the Phusion software suite focuses on a specific task in the information management process:

